



Natural Resources Conservation Service

Room 3416, Federal Building
700 W. Capitol Ave.
Little Rock, AR 72201
Web: http://www.ar.nrcs.usda.gov

FACT SHEET

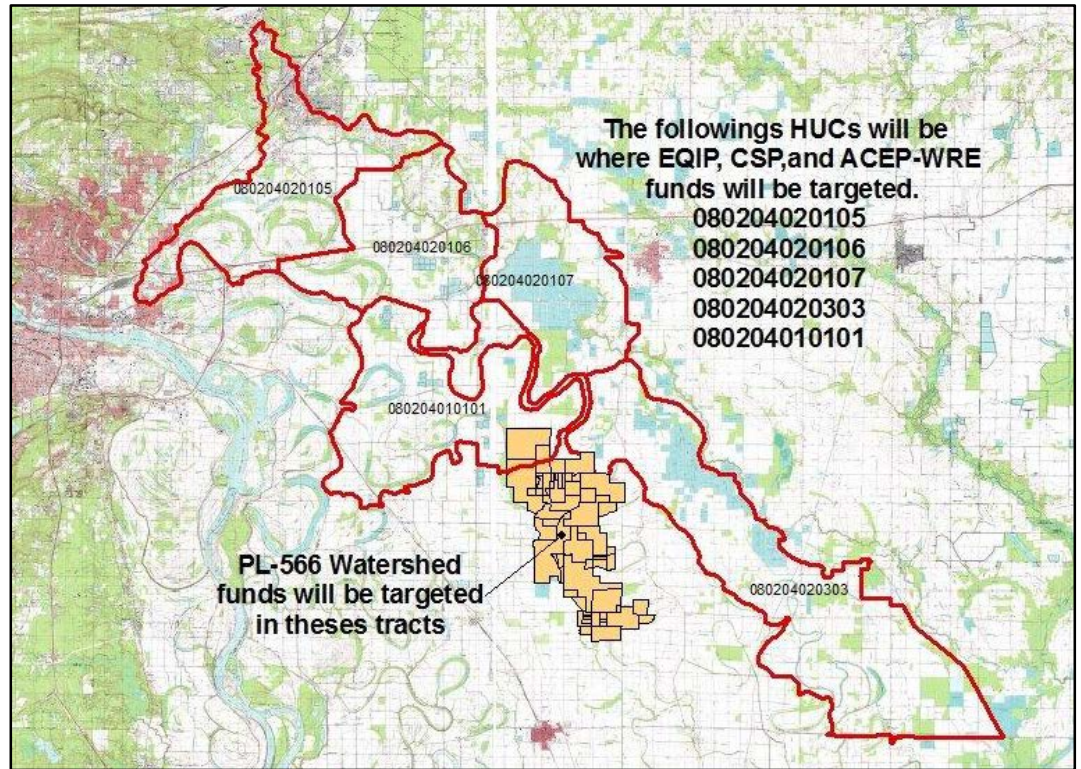
May 2015

2015 Regional Conservation Partnership Program
Bayou Meto - Lower Project

The Regional Conservation Partnership Program (RCPP) is a new, comprehensive and flexible program that uses partnerships to stretch and multiply conservation investments and reach conservation goals on a regional or watershed scale.

Project Overview

The Bayou Meto - Lower Watershed RCPP Project is a voluntary program that provides financial and technical assistance to agricultural producers for addressing water quality concerns in the Upper Crooked Creek, Steel Bridge Church-Bayou Meto, Bayou Ink-Bayou Meto, Snow Brake-Upper Indian Bayou, and Hall Creek-Bayou Meto watersheds in portions of Arkansas, Jefferson, Lonoke, Prairie and Pulaski counties. The project area covers 462,480 acres.



- Increase wetland restoration.
• Maintain agricultural productivity through improved irrigation efficiency practices.

Resource Concerns Addressed by the Project

- Water Quality Degradation (primary)
• Insufficient Water (secondary)
• Groundwater Decline (secondary)
• Inadequate Habitat for Fish and Wildlife (tertiary)

Project Goals

- Improve water quality by reducing nutrient loads entering the watershed.

Conservation Practice Funding

Funding will be available to eligible landowners through the Environmental Quality Incentives Program (EQIP), Agricultural Conservation Easement Program (ACEP); Conservation Stewardship Program (CSP) and PL-566. NRCS will provide financial assistance for a systems approach using approved conservation practices for the purpose of addressing resource concerns. Land and producer eligibility, adjusted gross income, and all



2015 Regional Conservation Partnership Program

Bayou Meto - Lower Project

other program criteria for participation must be met to participate in this initiative. Agricultural lands are eligible for enrollment in the initiative.

Approved Conservation Practices

- 104 - Nutrient Management Conservation Activity Plan (CAP)
- 118 - Irrigation Water Management CAP
- 122 - Agricultural Energy Management CAP
- 154 - Integrated Pest Management (Herb. Res)
- 313 - Waste Storage Facility
- 324 - Deep Tillage
- 327 - Conservation Cover
- 328 - Conservation Crop Rotation
- 329 - Residue and Tillage Management/No-Till
- 340 - Cover Crop
- 342 - Critical Area Planting
- 345 - Residue and Tillage Management
- 386 - Field Border
- 390 - Riparian Herbaceous Cover
- 391 - Riparian Forest Buffer
- 393 - Filter Strip
- 410 - Grade Stabilization Structure
- 430 - Irrigation Water Conveyance
- 436 - Irrigation Storage Reservoir
- 443 - Irrigation System, Surface & Subsurface
- 449 - Irrigation Water Management
- 464 - Irrigation Land Leveling
- 484 - Mulching
- 490 - Tree/Shrub Site preparation
- 612 - Tree/Shrub Establishment
- 533 - Pumping Plant
- 554 - Drainage Water Management
- 587 - Structure for Water Control
- 590 - Nutrient Management
- 595 - Integrated Pest Management
- 607 - Surface Drain, Field Ditch
- 608 - Surface Drain, Main or Lateral
- 634 - Waste Transfer
- 643 - Restoration & Management of Declining Habitats
- 645 - Upland Wildlife Habitat Management
- 646 - Shallow Water Development & Mgt.

- 657 - Wetland Restoration
- 658 - Wetland Creation
- 659 - Wetland Enhancement
- 201 - Edge of Field Water Quality Monitoring and Evaluation (depends on availability of monitoring partner)
- 202 - Edge of Field Water Quality Monitoring, Equipment Installation (depends on availability of monitoring partner)

Conservation Stewardship Program Enhancements

- ANM12 - Shallow Water Habitat
- AM31 - Drainage Water Management
- PLT19 - Herbicide Resistant Weed Management
- SOE05 - Intensive No-Till
- SQL05 - Use of deep rooted crop to break up compaction
- SQL12 - Intensive Cover Cropping in Annual crops
- WQL05 - Apply Nutrients no more than 30 days prior to planned planting date
- WQL09 - Apply Phosphorus fertilize below soil surface
- WQL13 – High-level integrated pest management to reduce pesticide environmental risk
- WQL17 - Use of non-chemical methods to kill cover crops
- WQL25 - Split applications of nitrogen based on a PSNT
- WQL27 - Drainage Water Management for nutrient, pathogen, or pesticide reduction
- WQT03 - Irrigation pumping plant evaluation
- WQT05 - Remote monitoring and notification of irrigation pumping plant operation
- WQT12 - Computerized Hole Selection
- WQT13 - Intermittent Flooding

2015 Regional Conservation Partnership Program

Bayou Meto - Lower Project

How to Apply for RCPP

NRCS and associated conservation partners will deliver this program collaboratively. Applications may be obtained and filed with NRCS at:

<i>Lonoke County</i>	<i>Pulaski County</i>
Lonoke FSC 1300 N. Center St., Suite 8 Lonoke, AR 72086 (501) 676-5116, ext. 3	North Little Rock FSC Room 201, Arvest Bank Bldg. 4004 McCain Boulevard North Little Rock, AR 72116 (501) 758-2544, ext. 3

For More Information

If you need more information about RCPP, please contact one of the above offices or visit the NRCS Arkansas Web site at: www.ar.nrcs.usda.gov

Partners

Lead Partner

- Bayou Meto Water Management District

Collaborating Partners

- Arkansas Natural Resources Commission
- White River Irrigation District
- Pulaski County Conservation District
- University of Arkansas at Pine Bluff Aquaculture Center of Excellence
- Arkansas Game and Fish Commission
- Arkansas Association of Conservation Districts
- Diesel Motors, Inc.
- Lonoke County Farm Bureau
- Lonoke County Co-op
- Ducks Unlimited
- City of Lonoke
- Grand Prairie - Bayou Two Public Water Authority